





## Derby Road, Hoddesdon, EN11 0BG

This exquisite four-bedroom detached house, nestled within a desirable road and offering a wealth of potential for modern living. Approaching the property through the gated entrance, this impressive home boasts a double-width carport, along with additional parking options, and the opportunity to convert part of the exterior into garaging (subject to planning permission). Inside, the property features a functional home office or salon suited for today's lifestyle needs, as well as a convenient ground floor cloakroom. The attractive kitchen is designed for both functionality and style, while there is also a well-appointed bathroom. This lovely property presents a distinctive blend of comfort and elegance, making it an exceptional choice for families and individuals alike. The beautifully landscaped rear garden surrounds a heated swimming pool, creating an ideal setting for relaxation and entertaining. With potential for extension (subject to planning permission) and located in a sought-after area, this property is perfect for those looking to invest in their forever home or create a bespoke living space.

### Key features

- Gated entrance for enhanced security
- Spacious double-width carport with additional parking
- Versatile home office or salon space
- Elegant and functional kitchen
- Beautifully landscaped gardens with a heated swimming pool
- Potential for garaging conversion (subject to planning permission)
- Convenient ground floor cloakroom
- Attractive and well-appointed bathroom



[hoddesdon@paulwallace.co.uk](mailto:hoddesdon@paulwallace.co.uk)

01992 466471







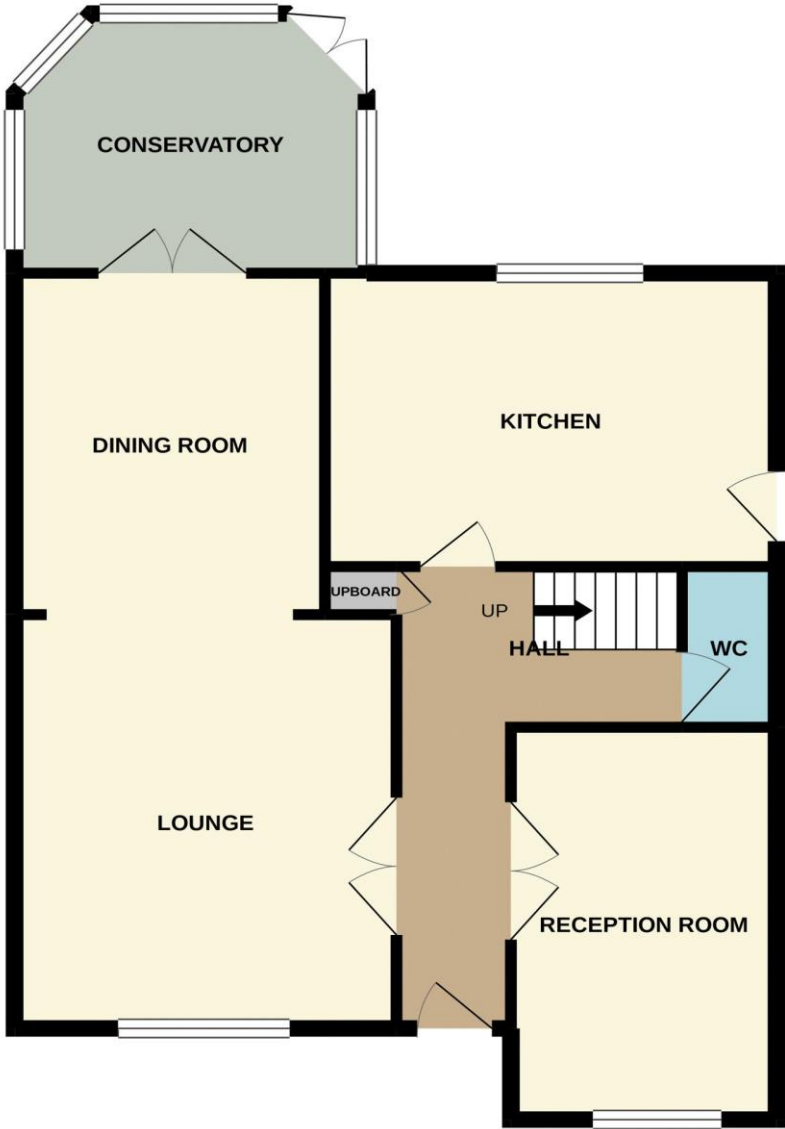
paulwallace



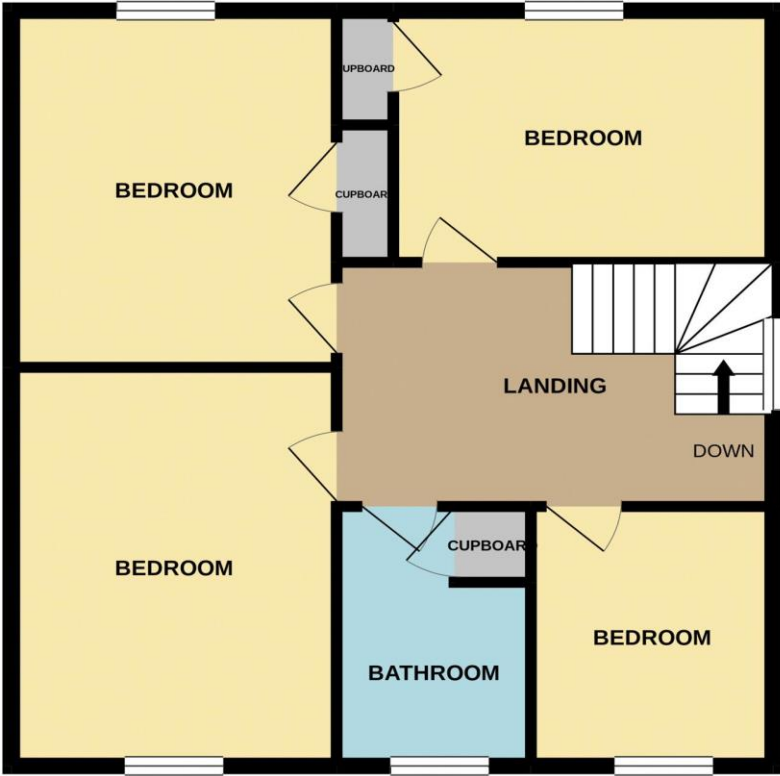




GROUND FLOOR



1ST FLOOR



Whilst every attempt has been made to ensure the accuracy of the floorplan contained here, measurements of doors, windows, rooms and any other items are approximate and no responsibility is taken for any error, omission or mis-statement. This plan is for illustrative purposes only and should be used as such by any prospective purchaser. The services, systems and appliances shown have not been tested and no guarantee as to their operability or efficiency can be given.  
Made with Metropix ©2020













Registered Address: Unit 3 The Brookfield Centre, Cheshunt, Herts, EN8 0NN Company Registration Number: OC414280 | VAT Number: 276958046©2022 Paul Wallace Group LLP trading as Paul Wallace Estate Agents



### Paul Wallace Estate Agents

70 High Street  
Hoddesdon  
Hertfordshire  
EN11 8ET



01992 466471



[hoddesdon@paulwallace.co.uk](mailto:hoddesdon@paulwallace.co.uk)



[www.paulwallace.co.uk](http://www.paulwallace.co.uk)



### Opening Times

Mon	9am to 6.30pm
Tues	9am to 6.30pm
Wed	9am to 6.30pm
Thurs	9am to 6.30pm
Fri	9am to 6.30pm
Sat	9am to 5.00pm
Sun	Closed



**paulwallace**  
estate agents

Agents Note: Whilst every care has been taken to prepare these sales particulars, they are for guidance purposes only. All measurements are approximate and are for general guidance purposes only and whilst every care has been taken to ensure their accuracy, they should not be relied upon. Potential buyers are advised to recheck the measurements.